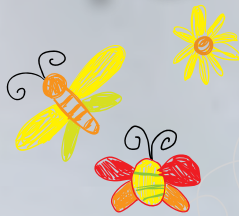
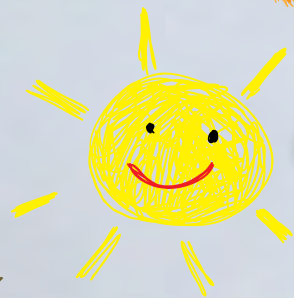


Building Outstanding Futures for our Children



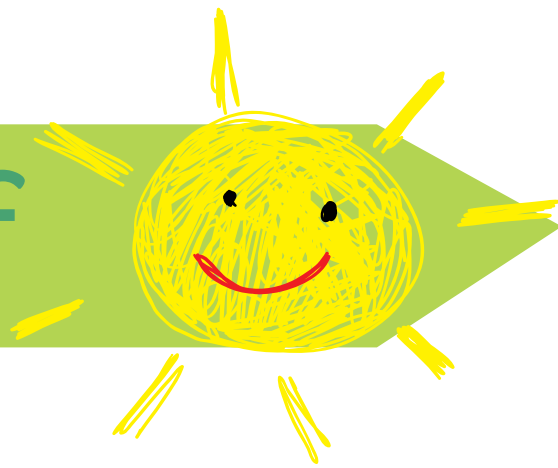
BOLTON
COLLEGE

Early years and
Pre-School Centre





Our Staff



We have over 13 members of staff all fully qualified to work with children. Our staff are passionate, hardworking and prioritise the care and educational needs of the children.

We are a dedicated workforce and proud of our journey in providing outstanding care and education for children.

We continue our professional development by attending regular, beneficial and worthwhile training. Our CPD includes all areas in early years practice. For example:

Specialising
working with
children under 2
years

Number
journey

Phase 1
Phonics

Mark Making to
Writing

Key Person
Training

Wellcomm
Training

OAP Training

Caring for
Children with
EAL

The value
of the EYP

Our Children



We care for children from 6 weeks old to school age.

Our children are happy, and enjoy playing with and alongside our staff and their peers.

Our children increase their social skills and learn to communicate with others.

They are treated fairly and all care is tailored to the individual needs of each child.

Each child is assigned a Key Person. The Key Person role is to provide professional love, care and attention to the growth, learning and development from birth to 5 years.



Our Environment



Our Early Years and Pre-School environment is an open plan layout. The children can play within mixed age groups allowing them to scaffold each other's learning. This is outstanding practice particularly when siblings attend the setting.

We promote our environment with a holistic approach to ensure all children have access to every area of learning.

We have a free-flow policy where children have access to the outdoor environment where they can explore further learning and development in an open space. We provide children with appropriate clothing to accommodate the differing weather conditions.

We embed a flexible routine to ensure children have long sessions of play and interaction. Additionally, children are provided with opportunities to take part in planned sessions.

Come and see! Our environment is very welcoming!



Our Supportive Nature



In our setting, we welcome children from all backgrounds. We ensure every child is treated fairly and is fully supported.

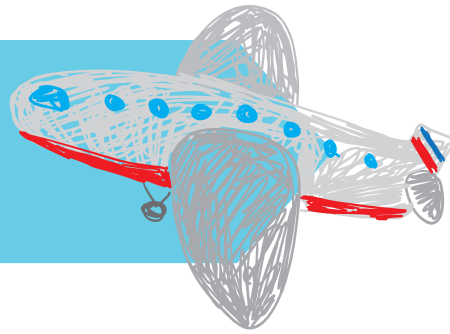
This includes supporting children with English as an Additional Language and children who may have additional needs. We have excellent partnerships with multi agency groups and provide several intervention strategies to narrow any gaps in children's learning.

This includes: WellComm, Language through Listening, Communication Champion and Elklan Specialist.

We also have a Special Educational Needs Co-Ordinator who works with children and families. We support parents and carers with any concerns or worries and ensure they are kept fully up to date during any learning and development journey.



Our Experiences



We ensure children experience new learning and opportunities. To do this, we plan and deliver many activities. Some of these include:

World Book Day

Healthy Body, Happy Me

Sports sessions

Mindfulness

Yoga

Dental Hygiene

Fundraising

Trips and Visits

A visit from the Police

A visit from the Fire Department

Minute of Maths

Letters and Sounds

Story Teller

Sign Language

Multi-Lingual Story Time

Enrichment



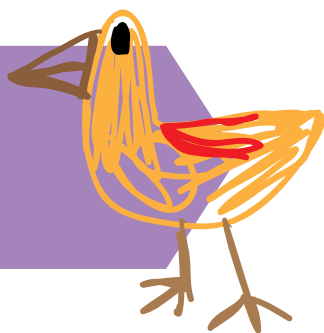
We are very grateful to be a part of Bolton College that can provide many opportunities and experiences for the children in our care.

We offer several enrichment activities where children have the chance to further their experiences and contribute to their learning and development.

Who?	What?
Art department	Staff and students visit the setting regularly to carry out an art project with the children
Hair and Beauty Department	Staff and students visit the setting regularly to take part in face painting activities and nail art.
Sports Department	Staff and students visit the setting regularly to do sports sessions with the children.
IT Department	Staff and students visit the setting regularly to introduce children to IT resources.
Performing Arts Department	The children regularly visit the performing arts studio to watch performances such as: Shrek, Puss in Boots.



Our Learning



We implement the O A P cycle as suggested by the Early Years Foundation Stage Curriculum. We carefully observe children and the skills they can do.

We assess their learning to ensure they are inline with their development. We plan next steps for children to work towards and achieve.

We provide interventions and focused activities for children who may require stretching and challenging. Our interventions help children to improve their learning in preparation for school readiness.



Our Partnership



Parents

We work very closely with the children's parents and pride ourselves on our successful relationships. We share information about their child's learning, development and experiences as well as upcoming information

Early Years Consultant

We have an Early Years Consultant with a wealth of experience and is highly qualified in Early Years Education and Care. Her support has enabled us to identify a strategic action plan to continuously improve our care for children.

Bolton Start Well

The Bolton Start Well team visit the setting regularly and work in partnership with us to review and evaluate our environment.

Ladywood Outreach

We work with staff from Ladywood Outreach to assess children who are displaying additional needs.

Snuffs

This is a voluntary support that we use where necessary for 1:1 support for children who require additional support.

Health Visitors

We share children's 2 year assessments with Health Visitors. We have regular contact to share information to ensure the wellbeing of our children.

Children's Opportunity Group

COG provide specialist care for children with additional needs. We liaise with the professionals to share best practice and informative advice. We may also refer children to their setting.

Paediatricians

We work with Paediatricians to share professional and medical information about a child's health and development.

Educational Psychologists

We work with Educational Psychologists to assist in the assessment of children's cognitive wellbeing.

PDLS – Physical Disability Learning Support

PDLS assist us in completing assessments on children's diets, sleep, toileting and other physical developmental needs.

Speech and Language Therapist

We liaise regularly with the Speech and Language Therapist. We discuss interventions appropriate for children tailored to their individual needs. We assess and share information about a child's communication and language progress.

Family Nurses

Family Nurses specialise in supporting children with young parents. We work closely together to support the needs of the families and provide shared advice and guidance.

Social Services

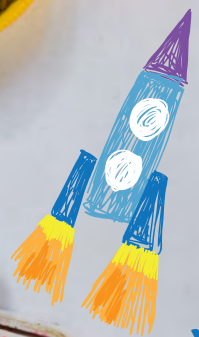
We liaise with social services to follow our safeguarding procedures. We attend Working Together to Safeguard Children meetings.

Neighbouring schools and nurseries

We liaise with neighbouring schools and nurseries to share best practice and prepare children for their transition to school.

Bolton College Staff

Being part of the UOB group, we have access to a variety of professionals and expertise who provide experiences and opportunities for our children.



We are very proud!

We all work extremely hard, and willingly to ensure each child in our setting receives outstanding care and education.



We have an open-door Policy, please feel free to visit us or ask any questions.



Thank you

