

THE NEXT LEVEL QUALIFICATION

T Level Programme Overview

When it comes to the digital sector, opportunities are endless, especially when it comes to support services; there's a growing and significant skills shortage, so with the right qualification, you could be highly employable!

Equivalent to three A Levels, this two-year programme has also been developed in collaboration with employers and businesses, so you can rest assured that the content is relevant and up to date.

You'll spend 20% of your time on an Industry Placement, giving you vital experience in the world of work and a CV to wow future employers. Your employer may also provide you with that invaluable first reference, whilst a number of our students have also been offered full-time contracts following successful Industry Placements.

What You'll Learn

Topics covered include:

- Testing Software
- Hardware & Data
- Planning a Digital Project
- Data in Software Design
- Fault Analysis & Problem Resolution
- Communication

On your Industry Placement, you'll work alongside professionals in the digital support services sector, and then depending on where your ambitions lie, you'll take it to the next level, focusing on an occupational specialism: Digital Infrastructure; Network Cabling; Unified Communication; or Digital Support.

Elements of study

Your programme consists of the following elements:

- Study of your chosen vocational subject - 80% of your programme
- Employability skills such as punctuality, attendance, communication and team work but most especially the values and expectations of your chosen occupational sector
- Industry Placement, giving you a taste of working life – 20% of your programme

- Tutorial and personal development such as healthy living, volunteering and citizenship skills.

Industry Placement

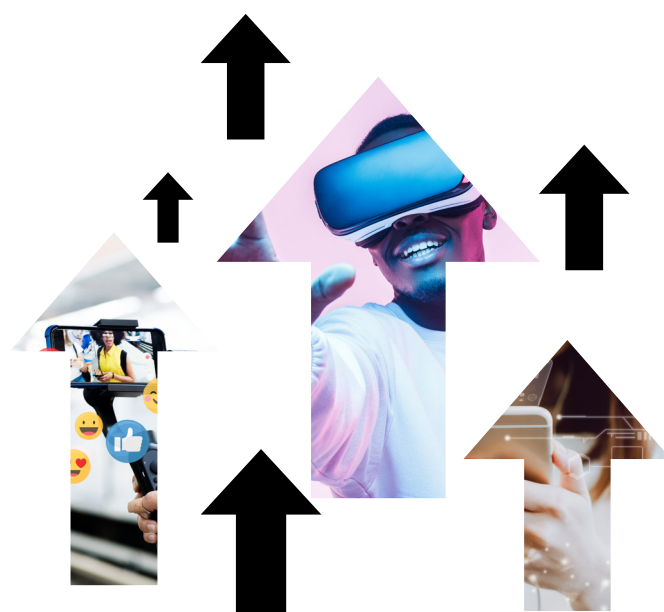
An Industry Placement is at the heart of your T Level; you'll experience an extended sector-specific Industry Placement for 20% of your programme.

You'll be supported throughout by your own dedicated Workplace Coordinator, which means that on completion of your course, you'll be work ready, with the qualifications and experience to progress to either your dream career or university!

Pre-Professionals Programme

As part of our Pre-Professionals Programme, you'll have your own personal Learning Development Mentor, supporting you throughout your time at College. You'll also have access to a Careers Coach and Workplace Coordinator - they'll help you to manage your studies; oversee your progress; aid in your personal development; and enrich your learning, giving you exposure to not only employers, but leading companies in your sector.

You'll benefit from masterclasses, industry visits and project-based learning, and you'll also receive support with CV writing, personal statements, mock interviews and more, so that when it comes to the crunch, you have the skills and confidence to impress.



THE NEXT LEVEL QUALIFICATION

Supporting Your Learning and Wellbeing

We have a range of dedicated support and wellbeing services including **FREE** travel; **FREE** breakfast; dedicated Learning Development Mentors (LDMs); impartial advice and guidance; dedicated one-to-one support for learners with additional needs; and support with the cost of College, plus much more.

Entry Requirements

A minimum of five GCSEs at grade 4 or above, including English and Maths.

How will I be Assessed

You'll be assessed via a mixture of assignments, employer-set projects and exam(s).

Future Opportunities

The sole purpose of a T Level is to prepare you for employment and a dynamic career. Due to the broad range of topics covered on the Digital Support Services T Level, you'll be equipped for a career in a variety of settings. You could work as a:

- Digital Support Technician, earning up to £35,000 per year
- Solutions Architect, earning up to £80,000 per year
- Digital Delivery Manager, earning up to £60,000 per year

As the T Level is equivalent to three A Levels, you could even decide to progress to university or a paid Apprenticeship, if you choose.

Enrichment

Sitting a job interview, writing a personal statement, applying for university - taking part in our enrichment programme will give you a CV to wow in all of these situations! You'll benefit from:

- Inspiring trips and experiences
- Meetings with industry experts
- Visits to leading companies in your sector.

As well as giving you essential professional and technical skills, you'll demonstrate that you're a successful and well-rounded person, helping you to make a lasting impression.

We want you to have fun, so we also have plenty of leisure and sporting activities for you to enjoy, improving your health and wellbeing.



Disclaimer: Every care has been taken to ensure that the information contained within these course information sheets was accurate at the time of publishing. Bolton College is constantly evaluating its services to meet the needs of learners; therefore programmes/courses/Apprenticeships, resources and facilities may be subject to change without prior notice.



COMPUTING, DIGITAL & IT

Digital Support Services T Level

T-LEVELS

THE NEXT LEVEL QUALIFICATION

THE NEXT LEVEL QUALIFICATION

Why Choose Us?

We're an elite College, and part of the University of Bolton Group, offering you a gateway to all of Greater Manchester's vast range of fantastic opportunities for specialist careers, university degree courses and higher Apprenticeships.

We'll reward your achievements with trips to The Anderton Outdoor Activity Centre and the opportunity to apply for the prestigious Duke of Edinburgh Award.

Our £75 million campus offers a refurbished fitness suite and sports hall; Apple Mac suites; libraries, a theatre and dance studios; hair and beauty salon; and a restaurant, café and canteen.

You'll also enjoy a wide range of events, including showcases, enterprise activities and cultural celebrations.

Open Events

Open Events are the best way to discover what life as a Bolton College student is like, giving you an insight into College life.

Open Events at our Deane Road Campus are as follows:

- Thursday 20th October 2022, 5pm-8pm
- Tuesday 15th November 2022, 5pm-8pm
- Wednesday 7th December 2022, 5pm-8pm
- Wednesday 8th February 2023, 5pm-8pm

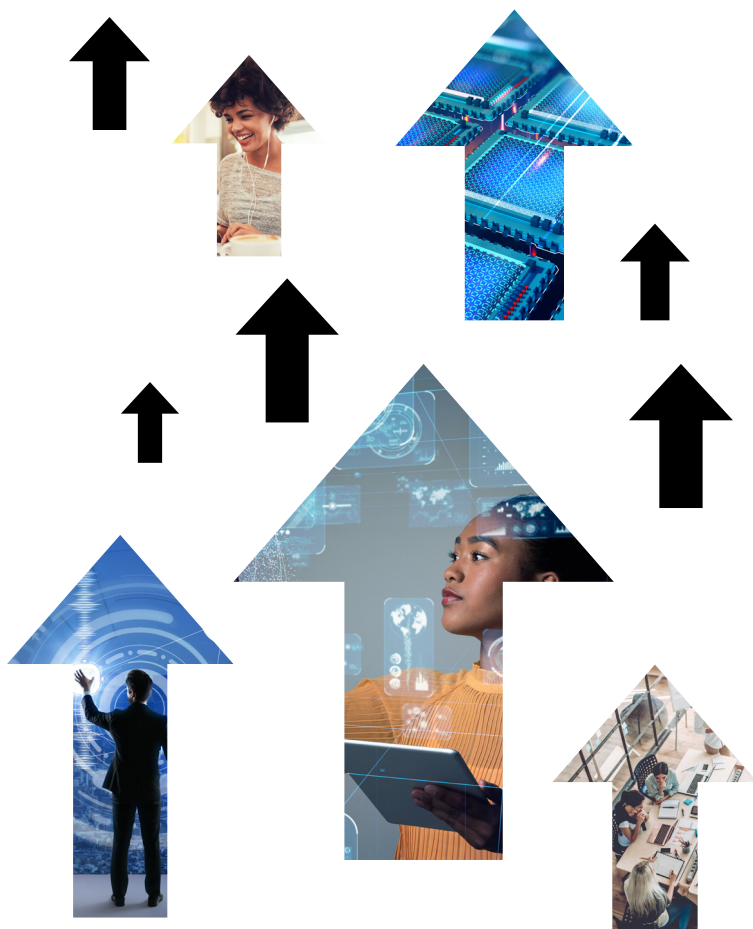
If you'd like to attend one of these events, register by visiting www.boltoncollege.ac.uk/register-open-events

How to Apply?

Find this course on our website www.boltoncollege.ac.uk then click the 'Apply' button.

You'll be asked to set up a Learner Hub account so that you can track your application and enrol online. You'll also be asked to book your interview for your course at the same time.

If you have any difficulties setting up your Learner Hub account, please email learner.hub@boltoncc.ac.uk



www.boltoncollege.ac.uk/young-people